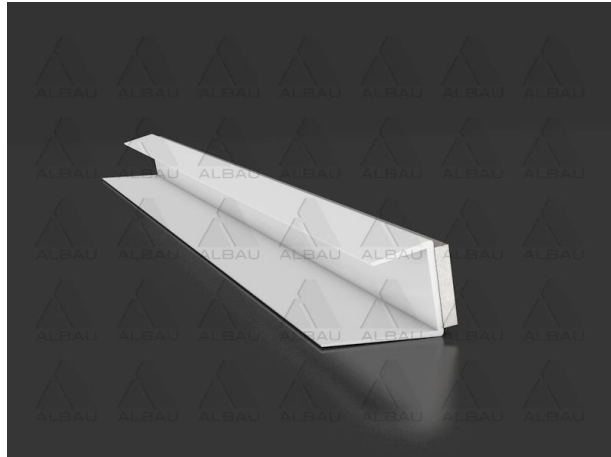


## PJ-12F-25 /Plasterboard edging profile with dilatation tape



**Application:** Drywall edging profile PVC with dilatation tape. Drywall edging profile is used as a finish, for attaching drywall to window or door frame. Creates an aesthetically perfect finish.

### Advantages:

- Solving of problem with cracking and additional reparations;
- Aesthetic solution;
- Quick installation;
- Joint duration.

### Technical data:

Product code	EAN	Material	Width	Length	Package
ALB-PJ-12F-25	4751023401270	PVC	12,5 mm	2,5 m	50 pcs.
ALB-PJ-12F-30	4751023403700	PVC	12,5 mm	3,0 m	50 pcs.

### Installation tips:

- For a firm connection, the base has to be dry, even, free of adhered pollution, dust and grease;
- The shortened profile must be carefully laid on the edge of the plasterboard board;
- Unpeel and fold back about 3 cm of the backing paper from the tape;
- Attach the plasterboard board with the profile to the target position of the frame (windows, doors);
- Gradually remove the remaining backing paper from the tape and press the plasterboard board with attached profile against the frame so that the tape bonds over the entire surface;
- Then perform mechanical anchoring of the plasterboard board for the lining (lintel) of the opening;
- To shorten the profile use scissors designed for work with plastic profiles;
- Application temperature (the temperature of the window frame, window molding and surrounding) must not be lower than 5°C;
- At low temperatures and strong winds, there must be counted with a lower starting glairiness and a longer time for the reaction of the adhesive.

### Storage:

A horizontal storage position is recommended. The profiles need to be stored in a dry place the temperature range of -5°C to +40°C. Maximum recommended storage time is 24 months.

**MADE IN EUROPE**

Distributor: Ltd "Albau" – Ritvari, Rumbula, Ropaži district, LV-2121, Latvia. Reg.No. – 40103561205  
[www.albau.eu](http://www.albau.eu)      [www.xbau.eu](http://www.xbau.eu)

